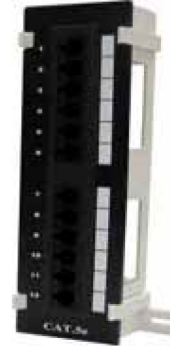




## Cat.5e/Cat.6 Mini Unshielded Patch Panel, 12-Port

### TYPICAL SPECIFICATIONS

Mini voice and data patch panels can be mounted almost anywhere, even in cramped quarters. Combine two or more panels in line and use patch cords to make connections. It also can be wall mounted vertically or horizontally on wall.



### FEATURES

- Cat.5e mini patch panel exceeds ANSI/TIA-568-C.2 category 5e and ISO 11801 2<sup>nd</sup> edition Class D and EN50173-1 standards.
- Cat.6 mini patch panel exceeds ANSI/TIA-568-C.2 category 6 and ISO 11801 2<sup>nd</sup> edition Class E and EN50173-1 standards.
- IDC connector can accept 23-26 AWG solid and stranded cables.
- Offer total solution of your local area networking.

### APPLICATIONS

- 10BASE-T, 100BASE-TX, 100BASE-T4, 1000BASE-T
- ATM-25, ATM-51, ATM-155
- 100VG-AnyLAN, TR-4, TR-16 Active, TR-16 Passive.
- Analog voice and digital voice (VoIP)
- Analog and Digital Video.

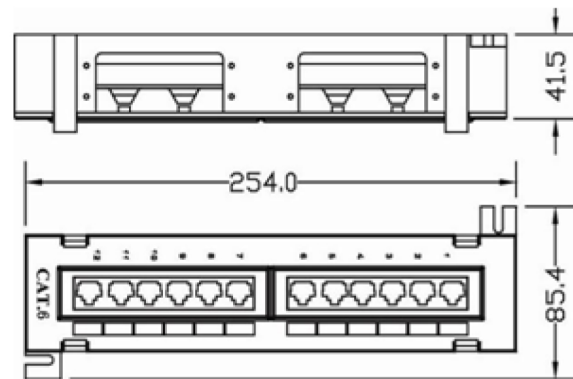
### ELECTRICAL SPECIFICATIONS

Dielectric Strength:	1000V RMS for 1min
Insulation Resistance:	10MΩ min
Contact Resistance:	2mΩ per contact
Temperature Range:	-10°C to 60°C max
Humidity :	10%-65%

### PHYSICAL SPECIFICATIONS

- High impact plastic housing, Flame retardant UL 94V-0
- IDC Operating life : minimum 250 insertions
- IDC Contact : 0.8mm thickness phosphor bronze, Tin plating over nickel
- Jack Contact : phosphor bronze, 50μ Inch thickness gold over nickel
- Jack Operating life : minimum 750 insertions
- PCB : FR-4, 1.6mm thickness
- Panel Material: SECC, 1.5mm thickness

### DIMENSIONS



Unit:mm



# Product Specification



## PERFORMANCE

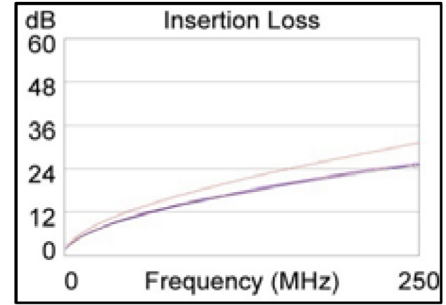
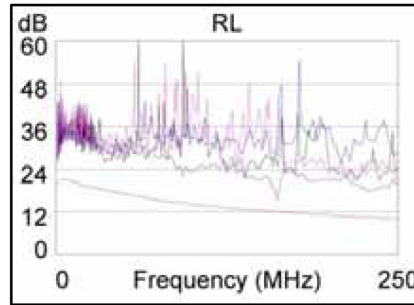
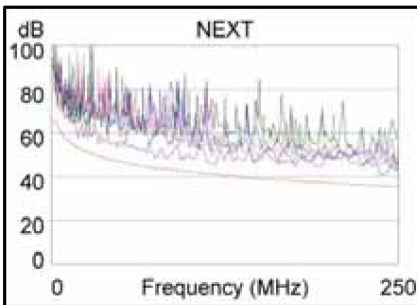
### Cat.6

Wire Map (T568B)

**PASS**



Length (m), Limit 90.0	[Pair 45]	84.8
Prop. Delay (ns), Limit 498		438
Delay Skew (ns), Limit 44		28
Resistance (ohms)	[Pair 12]	13.2
Insertion Loss Margin (dB)	[Pair 78]	5.4
Frequency (MHz)	[Pair 78]	249.0
Limit (dB)	[Pair 78]	31.0



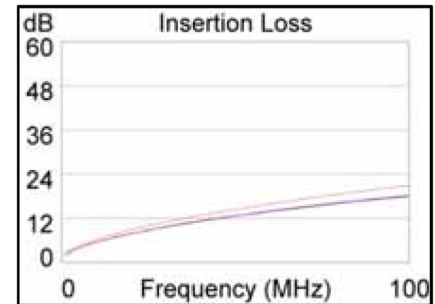
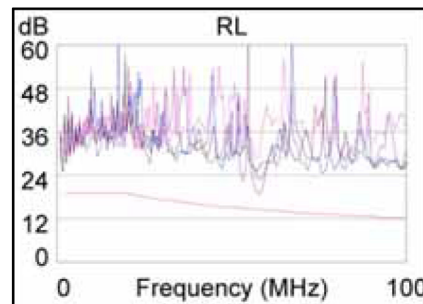
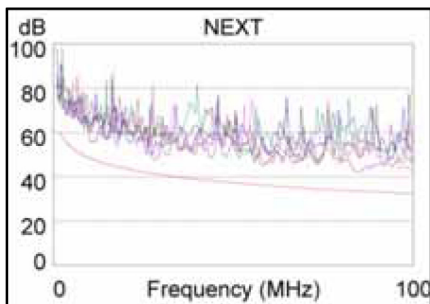
### Cat.5e

Wire Map (T568B)

**PASS**

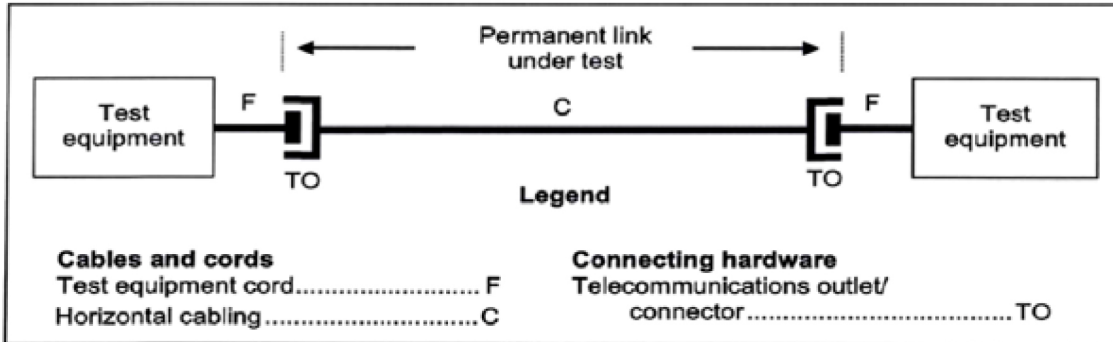


Length (ft), Limit 295	[Pair 78]	290
Prop. Delay (ns), Limit 498		439
Delay Skew (ns), Limit 44		12
Resistance (ohms)	[Pair 36]	16.3
Insertion Loss Margin (dB)	[Pair 36]	2.7
Frequency (MHz)	[Pair 36]	100.0
Limit (dB)	[Pair 36]	21.0





## Permanent Link test method



## ORDER INFORMATION

### Part No.

YPPM-EUHT-6/12

YPPM-EUHD-6/12

YPPM-6UHT-6/12

YPPM-6UHD-6/12

YPPM-B

### Description

Cat.5e Mini Unshielded Patch Panel, 110 type IDC, 12-Port

Cat.5e Mini Unshielded Patch Panel, Dual type IDC, 12-Port

Cat.6 Mini Unshielded Patch Panel, 110 type IDC, 12-Port

Cat.6 Mini Unshielded Patch Panel, Dual type IDC, 12-Port

Mini Patch Panel Bracket,89D

Others: Available on Requests.

\*Although MAXI TELECOM has taken precautions to ensure the accuracy of the product specifications at the time of publication, however, we cannot be responsible for the errors, omissions, or changes due to obsolescence. All data contained herein is subject to change without notice.

